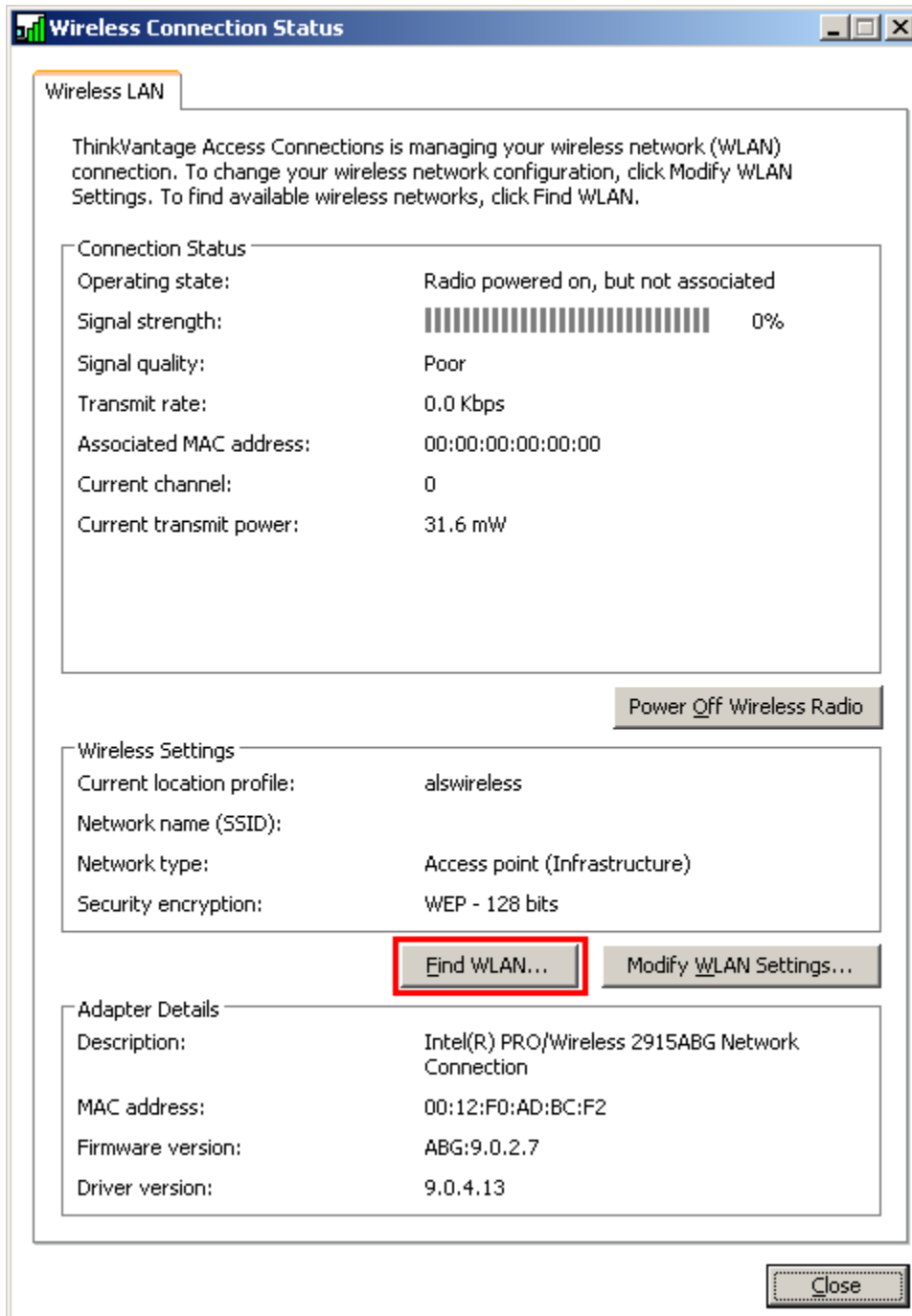


Directions for Connecting your Laptop to a Wireless Network Outside of Albany Law School

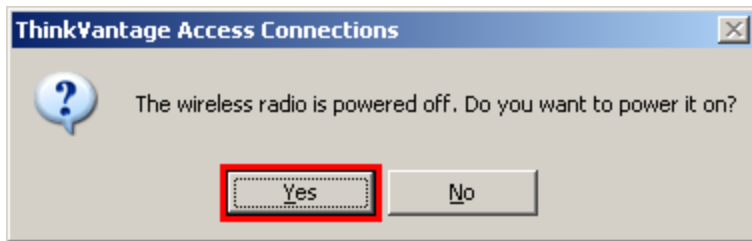
1. Double click the red highlighted icon found in the notification area.



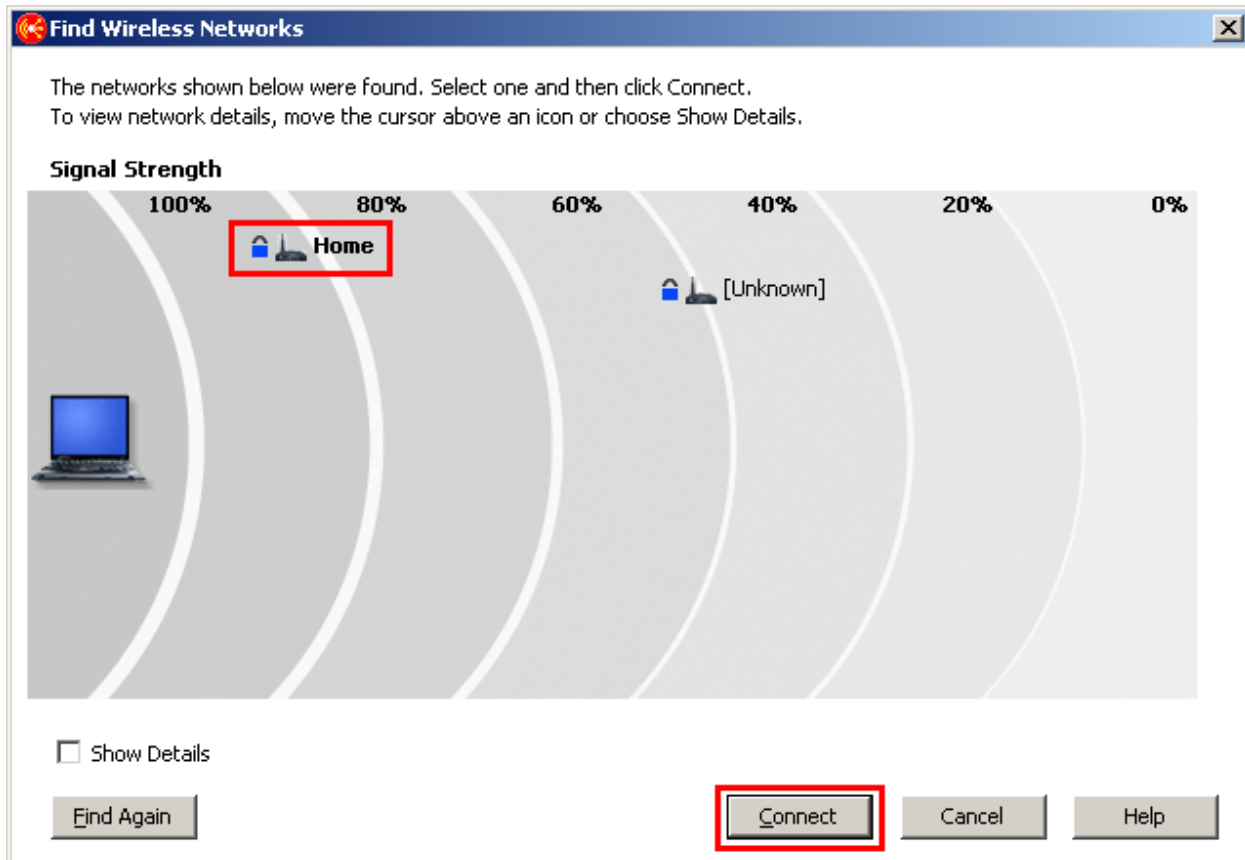
2. Click the "Find WLAN" button.



3. Click Yes if prompted (you may not see this window)

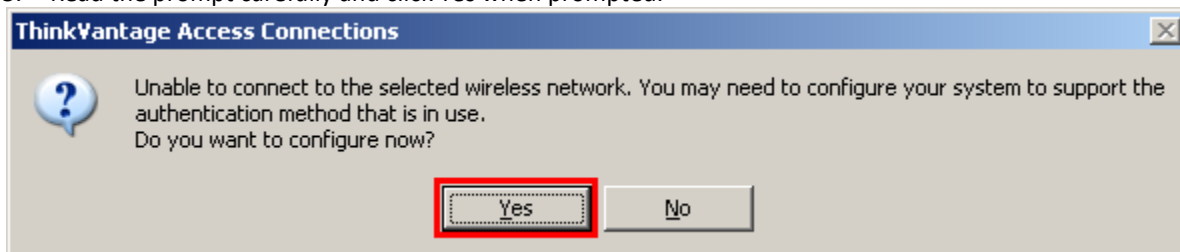


4. Substitute your wireless network name (as opposed to Home). Single click your wireless network and click the Connect button.

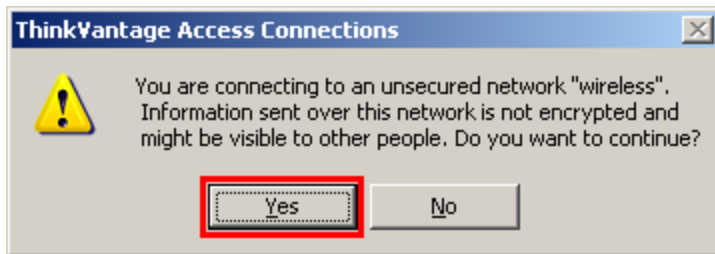


It is possible you will see multiple networks (your own and maybe a neighbor's). Just make sure to choose the appropriate one, most likely the one with the highest signal strength. The more to the left the network, the higher the signal strength.

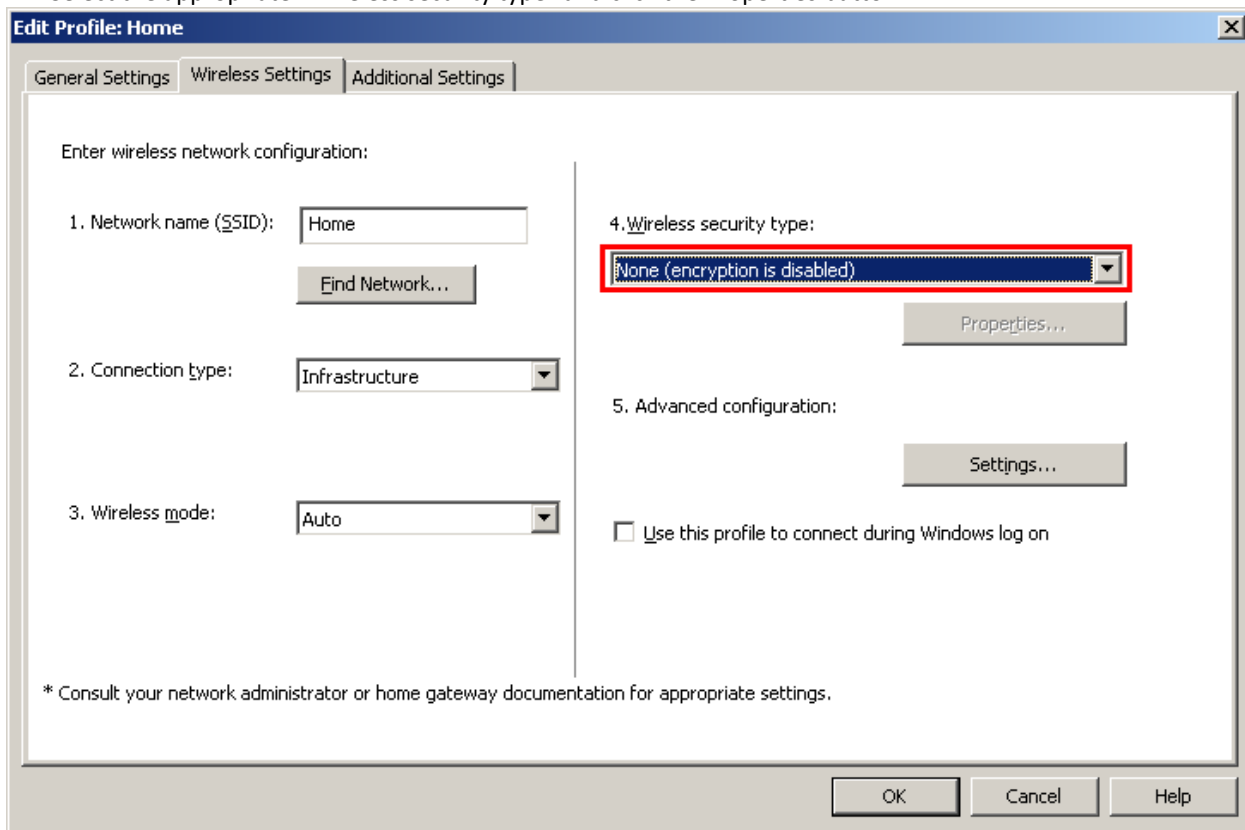
5. Read the prompt carefully and click Yes when prompted.

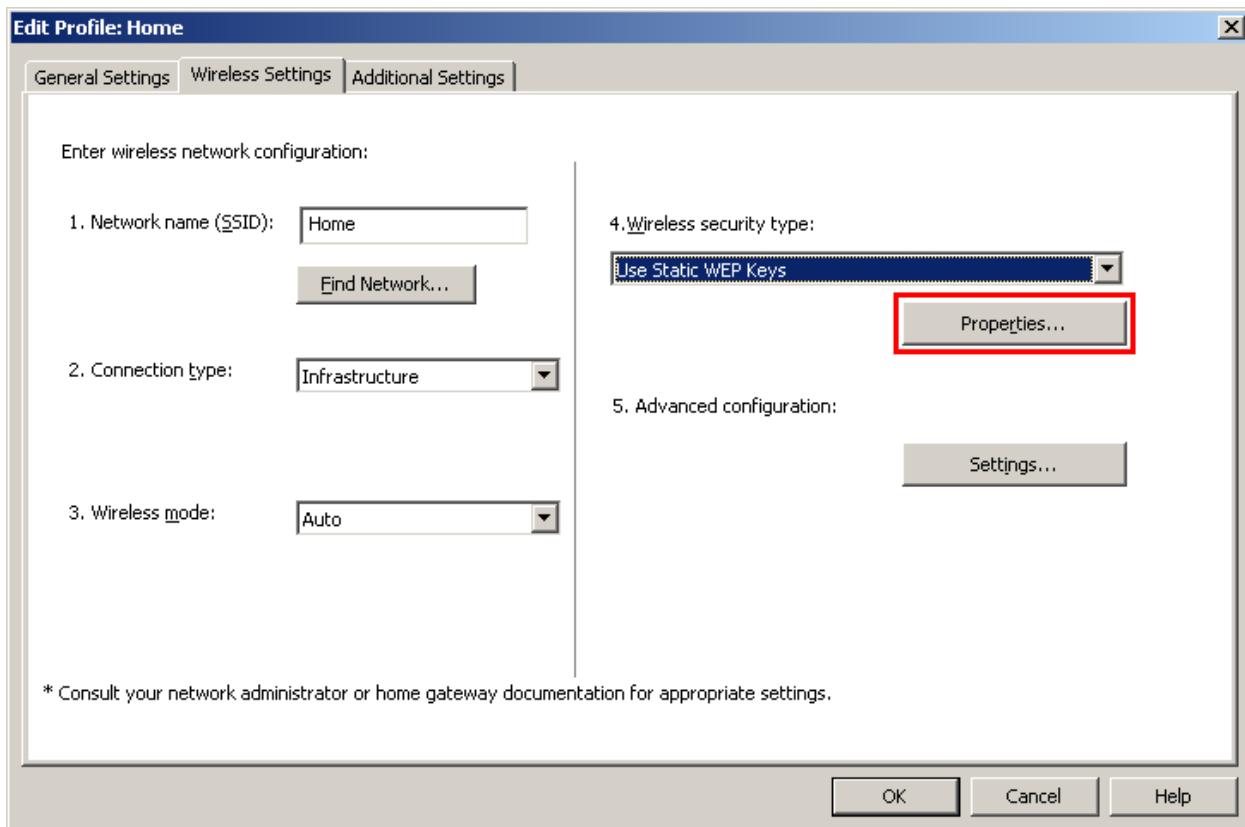
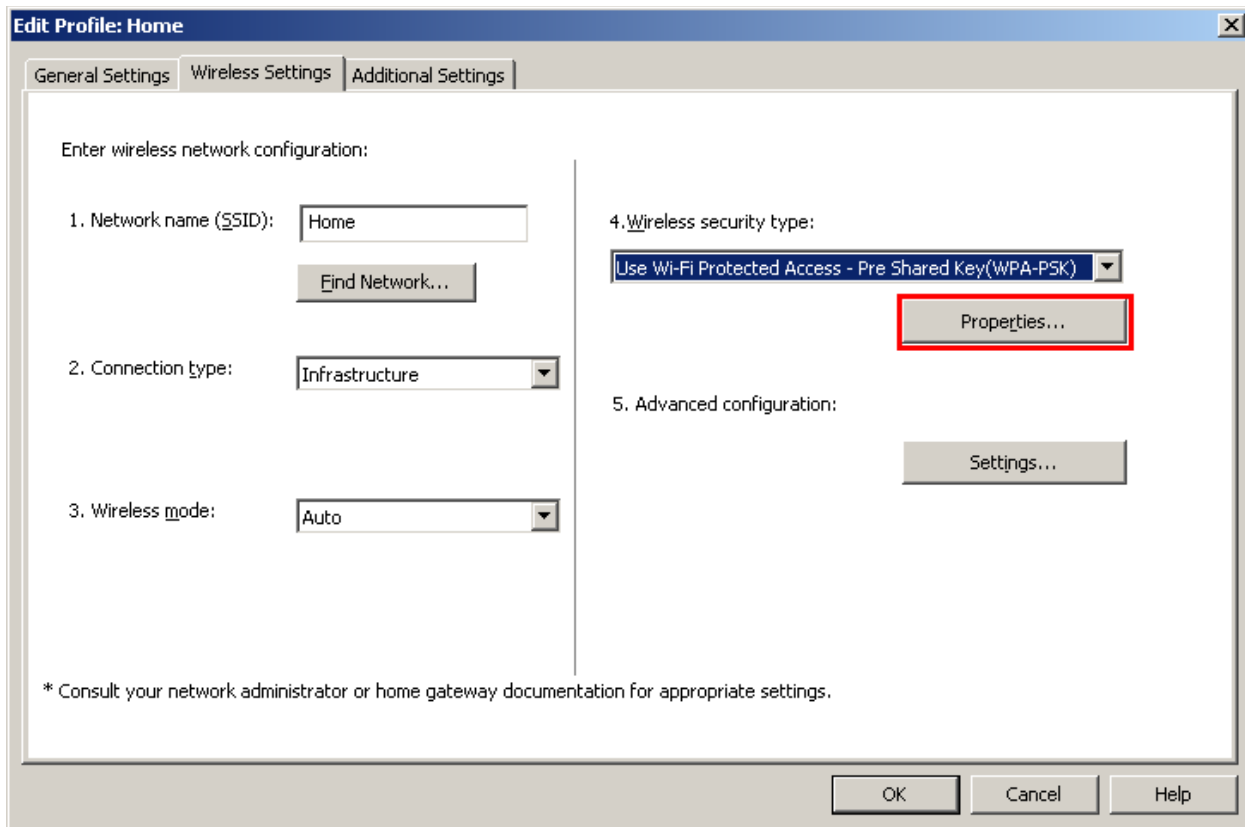


6. If you are trying to connect to wireless network that does not require a password, you will see this . Please make sure to read the prompt and take caution as the information you send is not encrypted.



7. Select the appropriate "Wireless security type" and click the Properties button.

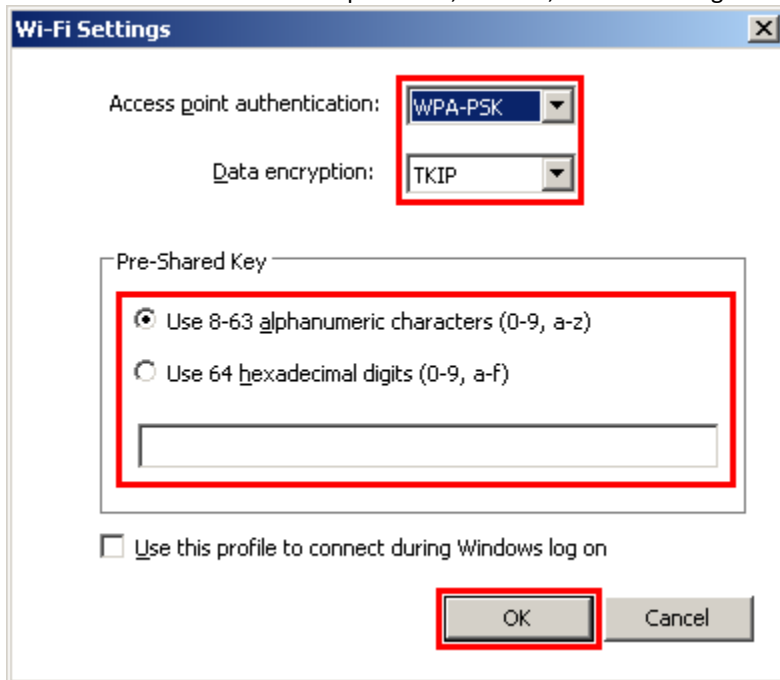




You will need to know the appropriate choices for the step described above. Please contact the person (or company) that administers the wireless network you are trying to connect to. The choices highlighted in blue are common forms of security and have been provided as common examples.

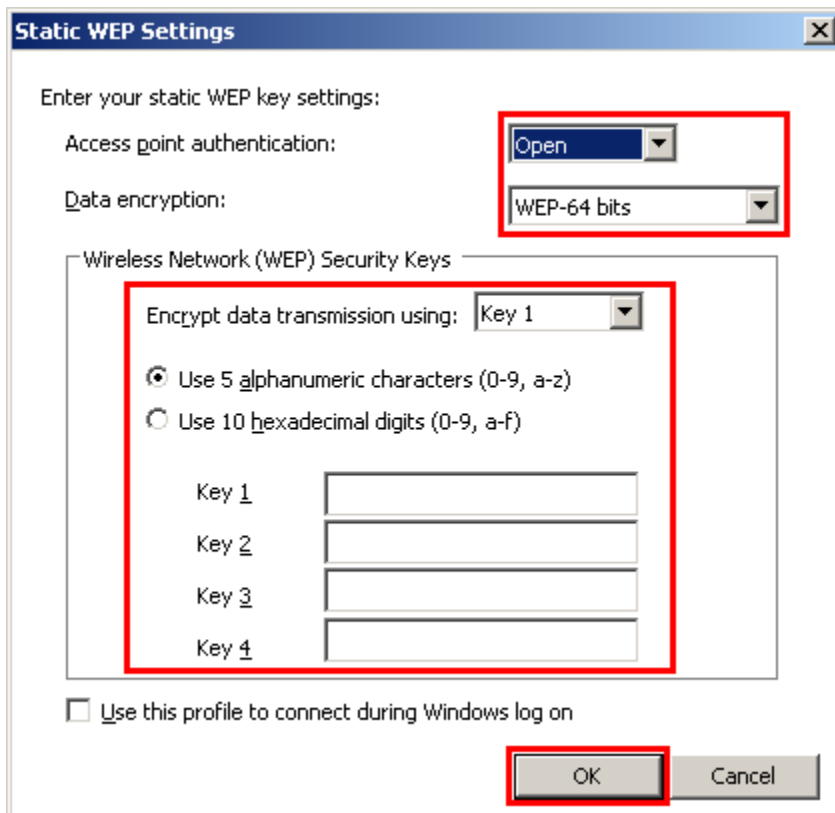
For home, we strongly recommend having a password protected "secure" wireless network. If your wireless router was provided by Time Warner (Road Runner), please contact them for further information on setting up.

8. Enter the wireless network password, click OK, and click OK again.



The image shows a Windows dialog box titled "Wi-Fi Settings". It has a blue title bar with a close button. The main area contains the following elements:

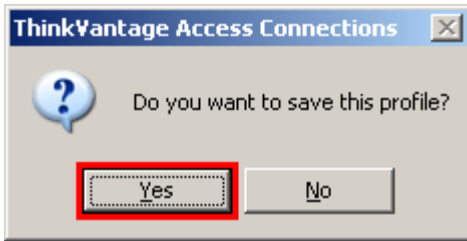
- "Access point authentication:" with a dropdown menu set to "WPA-PSK".
- "Data encryption:" with a dropdown menu set to "TKIP".
- A "Pre-Shared Key" section with two radio buttons:
 - Use 8-63 alphanumeric characters (0-9, a-z)
 - Use 64 hexadecimal digits (0-9, a-f)
- A text input field for the pre-shared key.
- A checkbox labeled "Use this profile to connect during Windows log on" which is unchecked.
- At the bottom, there are "OK" and "Cancel" buttons.



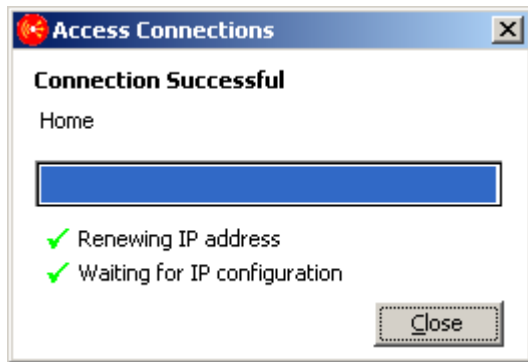
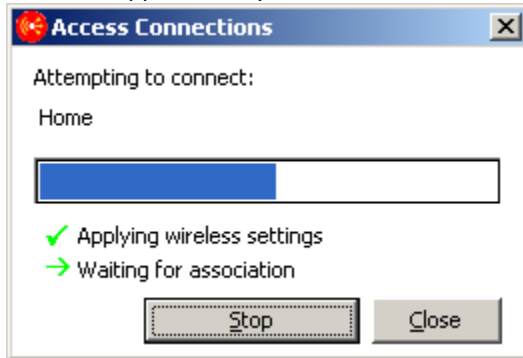
The image shows a Windows dialog box titled "Static WEP Settings". It has a blue title bar with a close button. The main area contains the following elements:

- "Enter your static WEP key settings:"
- "Access point authentication:" with a dropdown menu set to "Open".
- "Data encryption:" with a dropdown menu set to "WEP-64 bits".
- A "Wireless Network (WEP) Security Keys" section with a dropdown menu set to "Key 1" and two radio buttons:
 - Use 5 alphanumeric characters (0-9, a-z)
 - Use 10 hexadecimal digits (0-9, a-f)
- Four text input fields labeled "Key 1", "Key 2", "Key 3", and "Key 4".
- A checkbox labeled "Use this profile to connect during Windows log on" which is unchecked.
- At the bottom, there are "OK" and "Cancel" buttons.

9. Click Yes if you want to permanently save the location profile for future use.



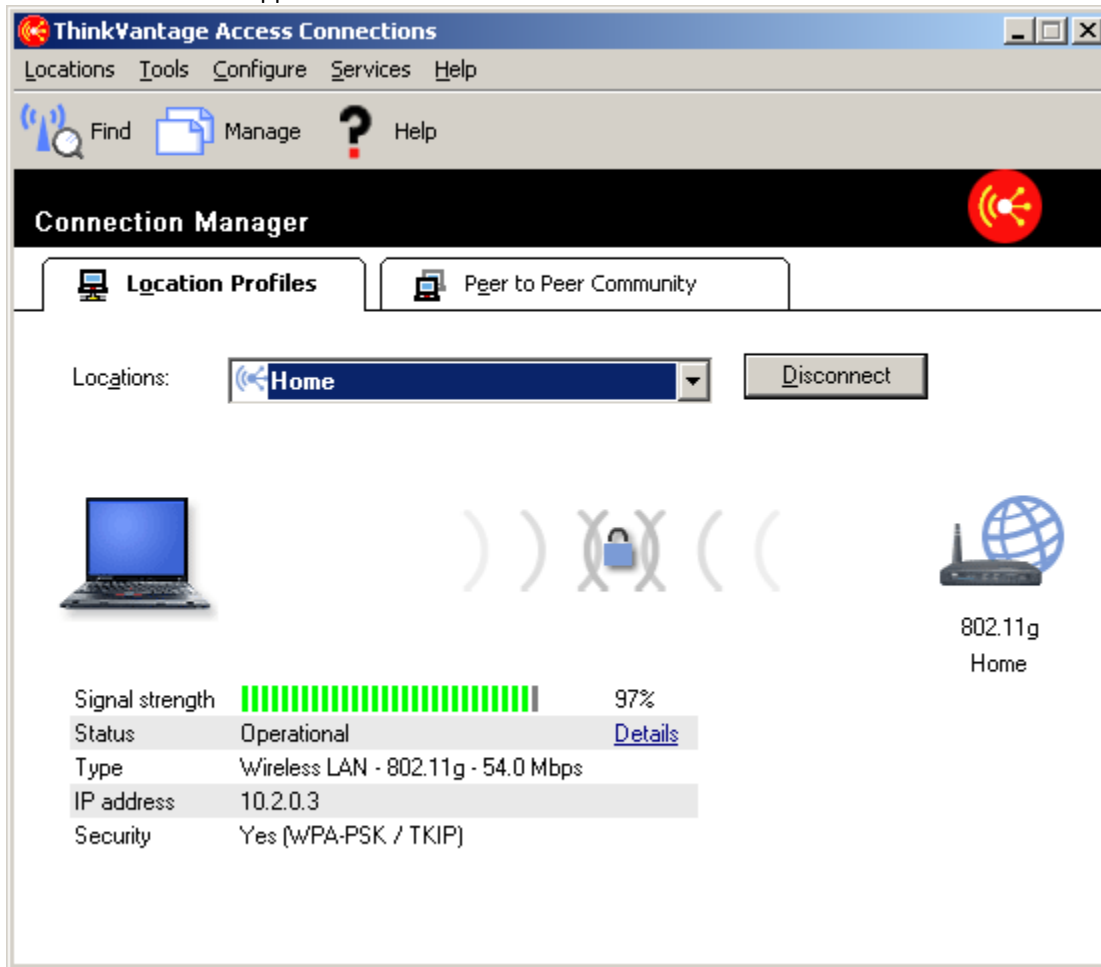
10. These will appear after you click the choice.



11. To view your new saved location profile, double click the red highlighted icon.



12. Your new location will appear.



13. If you ever need to activate this location profile manually, just follow this process, select the location profile, and click Connect.